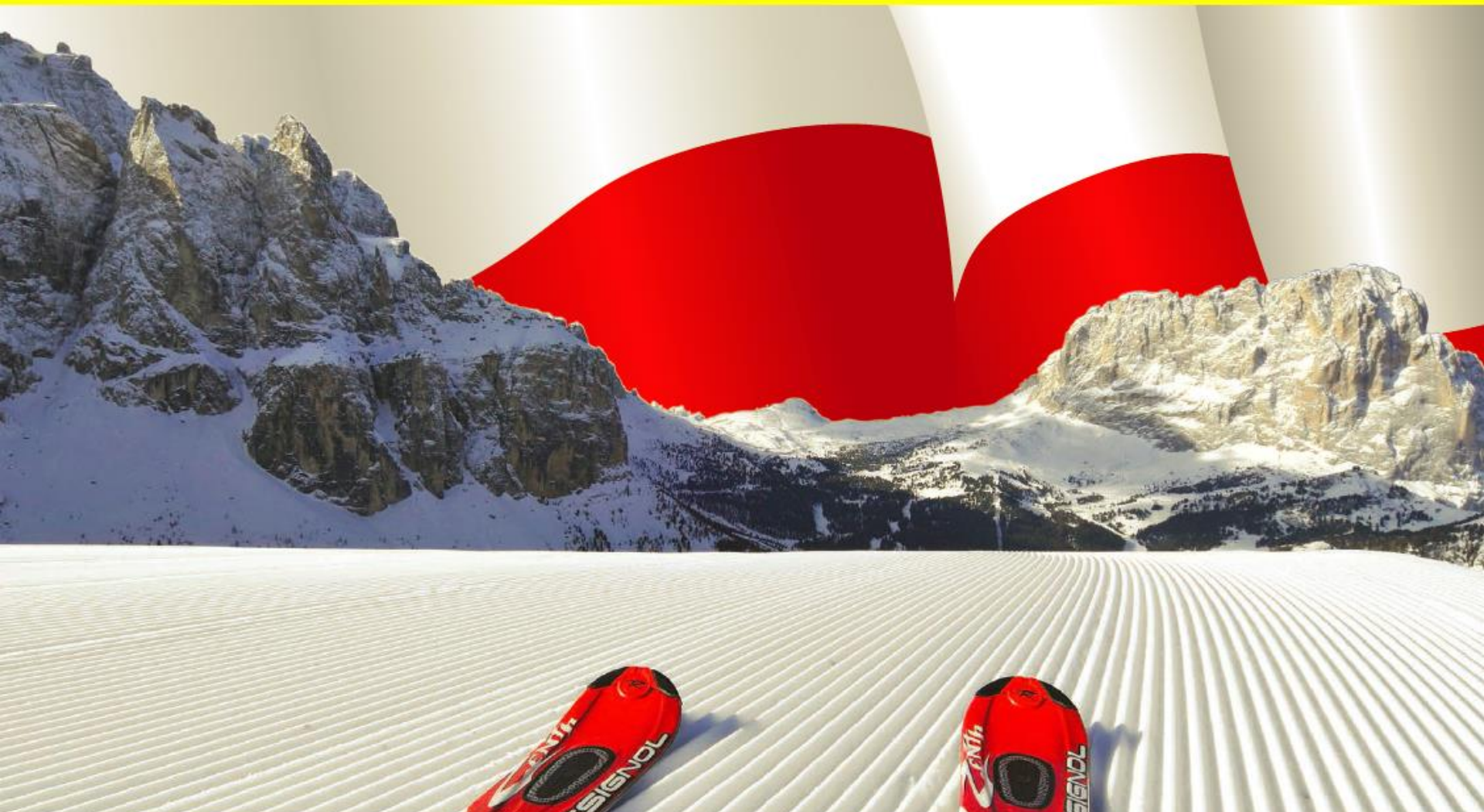


SKI TRIP AUSTRIA

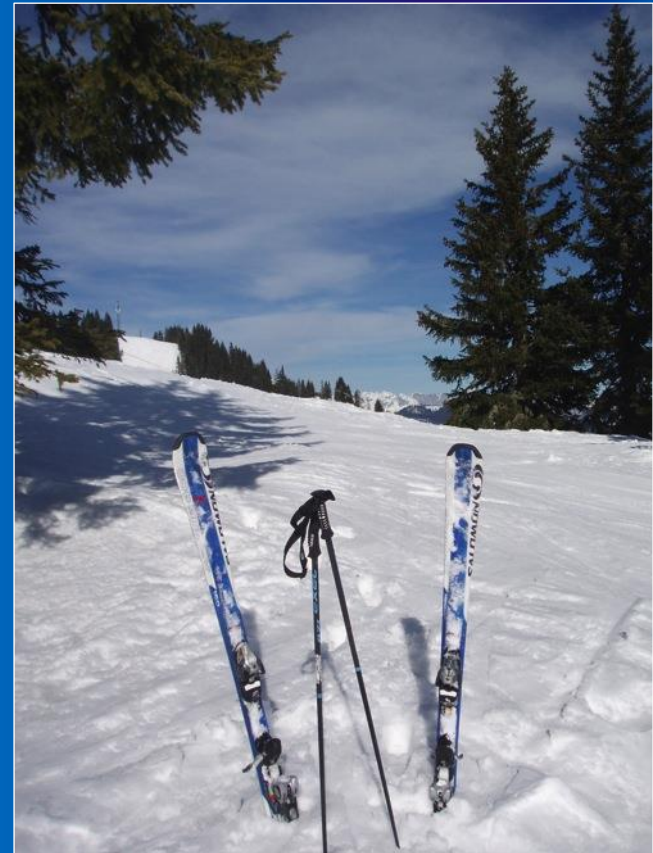


Sportwelde Amade, Austria

Saturday 13th April 2019 to
Saturday 20th April 2019*

Package:

- 5 nights dinner, bed & breakfast
- Evening meal before departure
- 5 days skiing
- 5 days hot lunch voucher*
- 5 hours of instruction each day
- Equipment hire and helmets
- Race and technical test
- Presentation/prize-giving



INTRO

ITINERARY

ACCOMMODATION

SKIING

IBT

QUESTIONS



Staff/adults

INTRO

ITINERARY

ACCOMMODATION

SKIING

IBT

QUESTIONS

Typical Itinerary (route timings are approximate and subject to travel conditions)

- Day 1 - 0300hrs Coach departs from Invergordon Academy – arrive by 0230!!!
1915hrs Check in Dover
2015hrs Sail Dover to Calais
- Day 2 - 1300hrs Arrive at resort, check into hotel , fire drill, ski fit & settle in
- Day 3 - First day skiing/boarding with 5 hours instruction
- Day 4 - Second day skiing/boarding with 5 hours instruction
- Day 5 - Third day skiing/boarding with 5 hours instruction
- Day 6 - Fourth day skiing/boarding with 5 hours instruction, ski race, test & presentation
- Day 7 - Fifth day skiing/boarding with 5 hours instruction, checkout out of hotel, dinner and depart 1930hrs for journey home
- Day 8 - Ferry crossing from Calais to Dover 1045hrs, arriving back at school Sunday morning approximately 0300hrs

The Journey

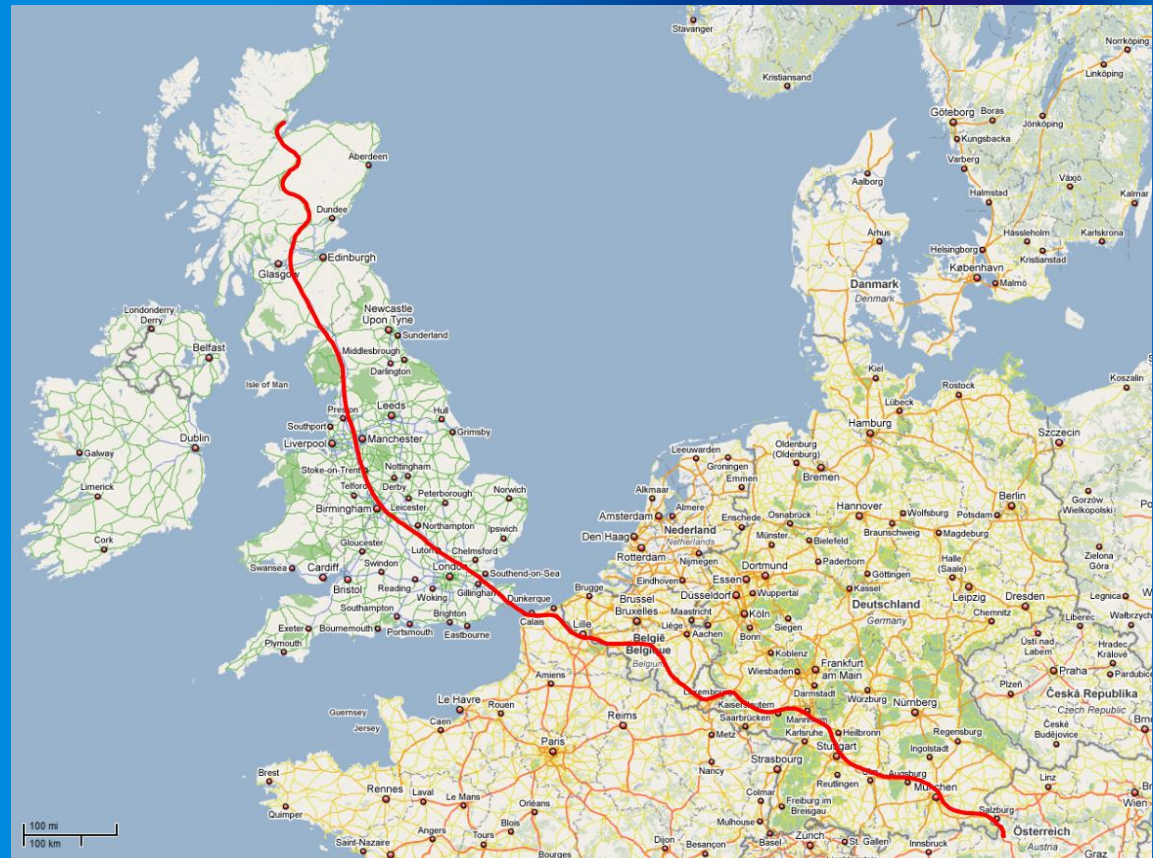
Invergordon, Scotland

Dover, England

Calais, France

Passing through Belgium,
Germany, Austria

Sportwelde Amade,
Austria



Transportation

Your transport will be provided by Simpsons of Rosehearty

Seat belts & toilet

Reclining seats

Air conditioning

TV with DVD player

Hot water boiler



INTRO

ITINERARY

ACCOMMODATION

SKIING

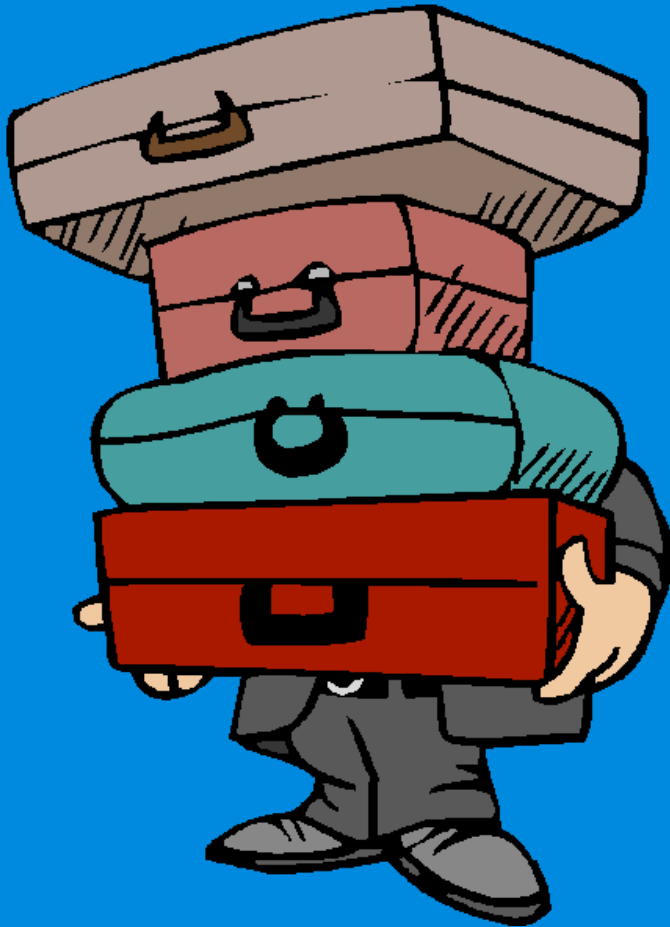
IBT

QUESTIONS

Transportation

Short Sea Crossing
Dover to Calais





Luggage

Typical luggage would be:

1 medium suitcase (soft bodied preferable)

Small carry on hold-all not more than 10 kg

For the journey

Comfortable clothes

Travel pillow, blanket

Phone/tablet

Books, magazines, DVD's*

Juice/water, snacks

Toiletries

INTRO

ITINERARY

ACCOMMODATION

SKIING

IBT

QUESTIONS



Medication

Clearly labeled (name, dose, frequency)

Hand in to school by Friday 18th December or
on the morning of departure.

e.g. Paracetamol, Aspirin, Ventolin, Travel
Sickness medication, etc



EUROPEAN HEALTH INSURANCE CARD

UK

3 Name
BODY

4 Given Name
ANOTHER

5 Date of birth
01/01/1901

6 Personal identification number
UK 7777 666

7 Identification number of the institution
1111 - ABC

8 Identification number of the card
90001 00001 001 0001 0001

9 Expiry date
01/01/2010

INTRO

ITINERARY

ACCOMMODATION

SKIING

IBT

QUESTIONS

Pocket Money



Suggest £150-£200 maximum

Mixture of Sterling and Euros

Main spending will be food & drink on journey
and snacks during stay

We are planning a visit to Salzburg on one
evening.

Hotel-Gasthof Goldener Ochs, Golling

Pupils will be accommodated in multi-bedded rooms
Free wi-fi, restaurant, pizzeria, separate function room, quiet courtyard and garden.

In the centre of the picturesque town of Golling providing easy access to nearby shops. The hotel is 25 minutes from Alpendorf and Flachau ski areas.



This hotel has been owned by the Astner family since 1919. The family have worked successfully with school groups for many years and their friendliness and kindness ensures a memorable stay for all.

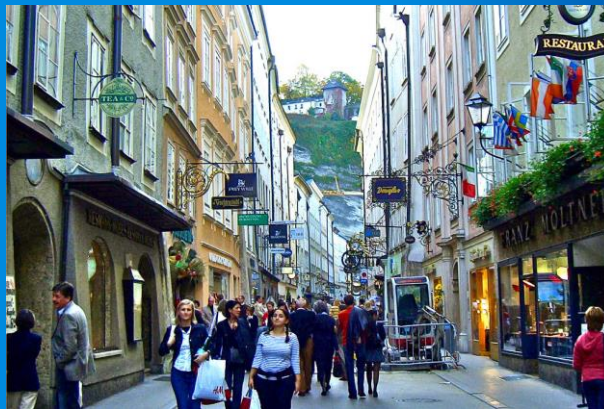
Evening entertainments:

Monday - Swimming

Tuesday - Billiards

Wednesday - Salzburg visit followed by Pizza

Thursday - Bowling



INTRO

ITINERARY

ACCOMMODATION

SKIING

IBT

QUESTIONS

Skiing – Sportwelde Amade, Austria



Ski/Boarding Instruction

We employ the services of the local branch of the official National Ski School.

All Instructors are fully qualified and have an intimate knowledge of the ski area and safety procedures therein.



- 5 hours of instruction per day
- Hot lunch voucher for use in mountain restaurants

Ski Clothing

Ski jacket

Ski trousers/salopettes

Hat

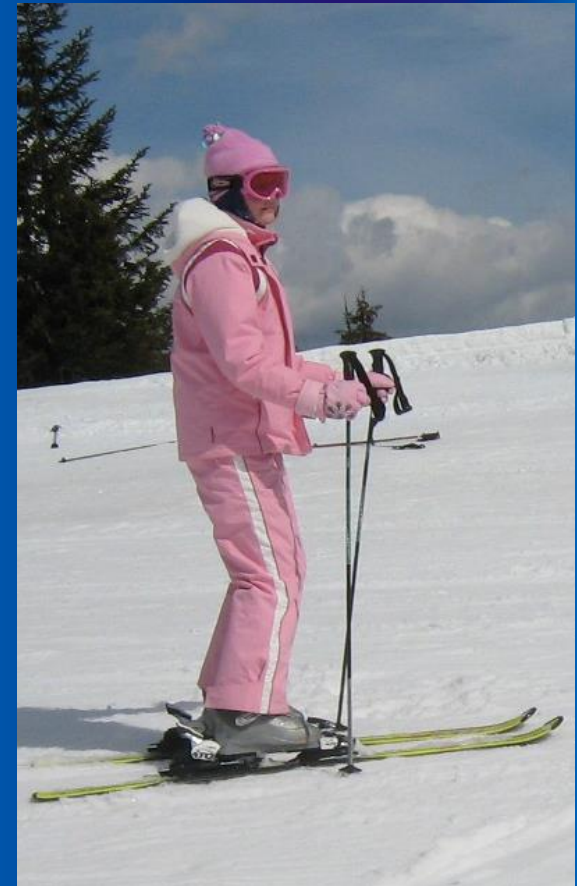
Gloves

Goggles

Thick socks



Thin, warm LAYERS underneath
(thermal top/bottoms, fleece, base
layers/under-armour, leggings, tights)
Sun protection



Travelling with IBT

Group & School Tour specialists

Established for over 25years

Fully ABTA, ATOL, School Travel Forum bonded

Head office based in Prestwick

Quality ski destinations

Comprehensive Travel & Medical Insurance

24hr emergency telephone contact during tour



INTRO

ITINERARY

ACCOMMODATION

SKIING

IBT

QUESTIONS

Health & Safety

- ABTA Protection
- ATOL License
- STF Certified
- Safety Management System
- Personnel Checks
- Hotel Safety
- Public Liability
- Fully Insured
- 24hr Tour Support
- 24hr Medical Helpline
- In resort Management Team



INTRO

ITINERARY

ACCOMMODATION

SKIING

IBT

QUESTIONS

Contact IBT

IBT Travel
Cairn House
15 Skye Road
Prestwick
Scotland
KA9 2TA

Telephone : 01292 477 771

Email : info@ibt-travel.com

www.facebook.com/IBTTravel



INTRO

ITINERARY

ACCOMMODATION

SKIING

IBT

QUESTIONS

Any Questions?



