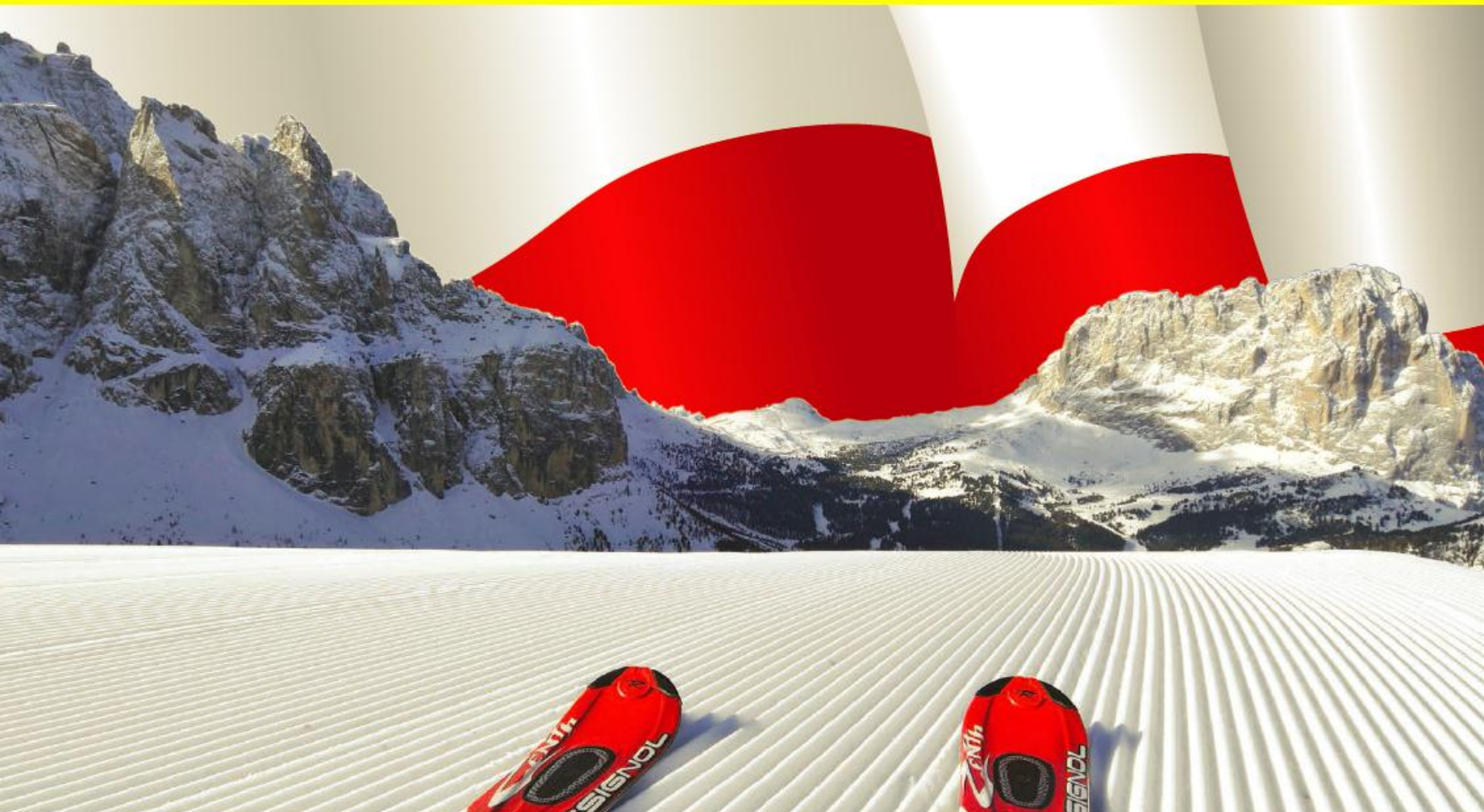


SKI TRIP AUSTRIA

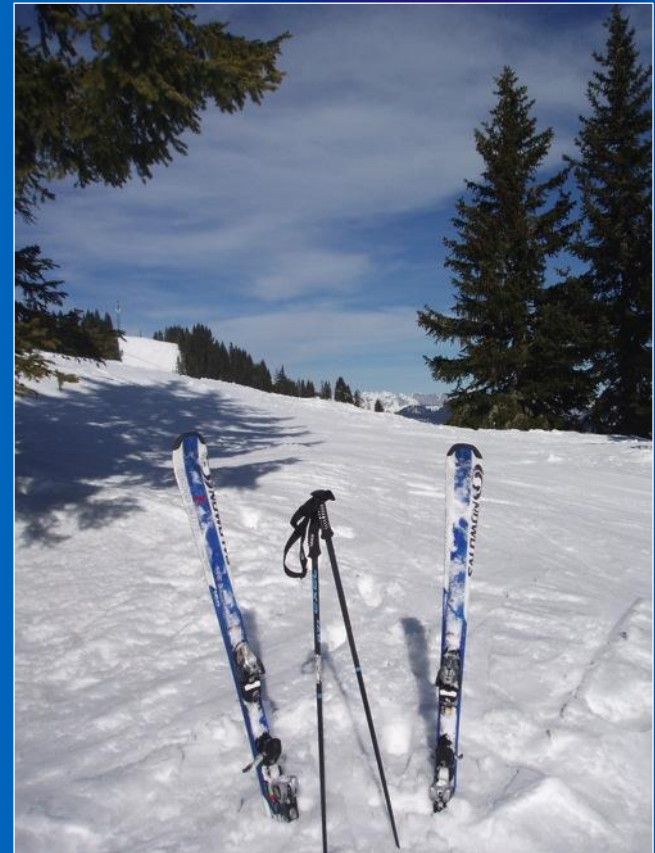


Sportwelde Amade, Austria

Saturday 2nd January 2016 to
Saturday 9th January 2016

Package:

- 5 nights dinner, bed & breakfast
- Evening meal before departure
- 5 days skiing/boarding
- 5 days hot lunch voucher
- 5 hours of instruction each day
- Equipment hire and helmets
- Race and technical test
- Presentation evening



INTRO

ITINERARY

ACCOMMODATION

SKIING

IBT

QUESTIONS



Staff:

Michael Aitchison

INTRO

ITINERARY

ACCOMMODATION

SKIING

IBT

QUESTIONS

Alison Drew



INTRO

ITINERARY

ACCOMMODATION

SKIING

IBT

QUESTIONS

Claire Ross



Typical Itinerary (timings are approximate and to be confirmed)

- Day 1 - 0700hrs Coach departs from Invergordon Academy
2100hrs Check in Dover
2205hrs Sail Dover to Calais
- Day 2 - Arrive at resort during afternoon, check into hotel , fire drill, ski fit & settle in
- Day 3 - First day skiing/boarding with 5 hours instruction
- Day 4 - Second day skiing/boarding with 5 hours instruction
- Day 5 - Third day skiing/boarding with 5 hours instruction
- Day 6 - Fourth day skiing/boarding with 5 hours instruction, ski race, test & presentation
- Day 7 - Fifth day skiing/boarding with 5 hours instruction, checkout out of hotel, dinner and depart 1800hrs for journey home
- Day 8 - Ferry crossing from Calais to Dover 1135hrs, arriving back at school Sunday morning approximately 0200hrs

The Journey

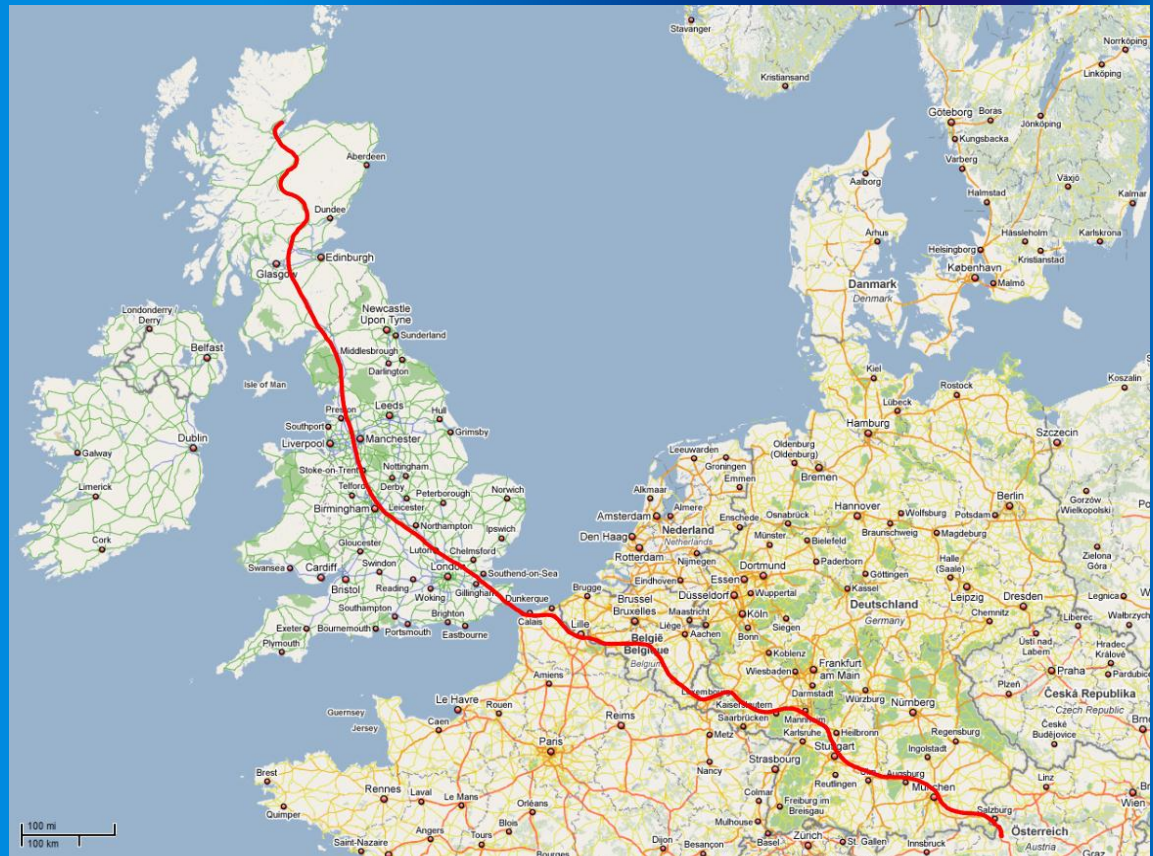
Invergordon, Scotland

Dover, England

Calais, France

Passing through Belgium,
Germany, Austria

Hüttai, Austria



Transportation

Your transport will be provided by Simpsons of Rosehearty

Seat belts & toilet

Reclining seats

Air conditioning

TV with DVD player

Hot water boiler



INTRO

ITINERARY

ACCOMMODATION

SKIING

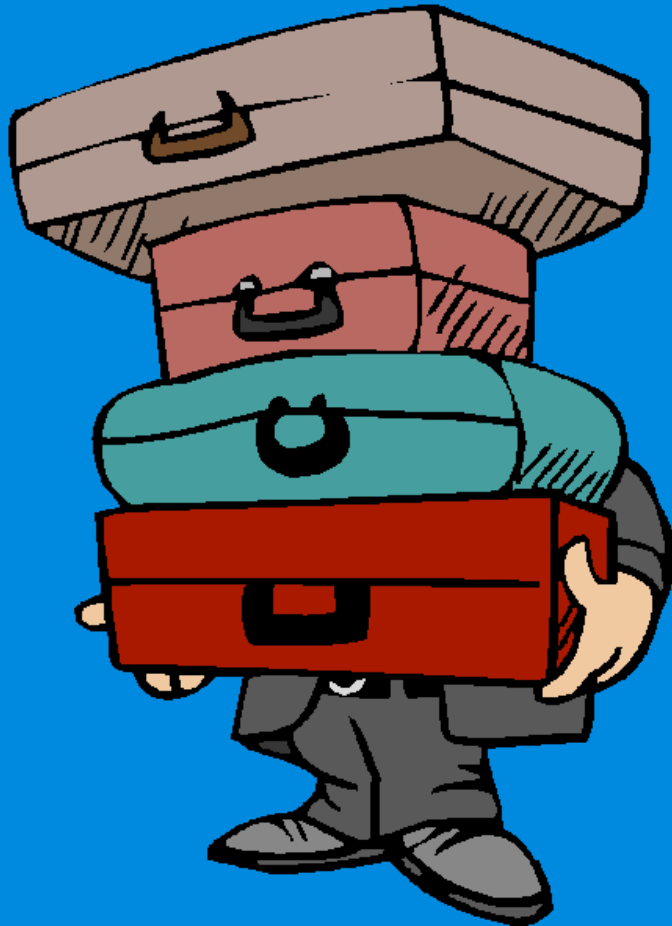
IBT

QUESTIONS

Transportation

Short Sea Crossing
Dover to Calais





Luggage

Typical luggage would be:

1 medium suitcase (soft bodied preferable)

Small carry on hold-all not more than 10 kg

For the journey

Comfortable clothes

Travel pillow, blanket

MP3 player, games console

Books, magazines, DVD's

Juice/water, snacks

Toiletries

INTRO

ITINERARY

ACCOMMODATION

SKIING

IBT

QUESTIONS



Medication

Clearly labeled (name, dose, frequency)

Hand in to school by Friday 18th December or
on the morning of departure.

e.g. Paracetamol, Aspirin, Ventolin, Travel
Sickness medication, etc



EUROPEAN HEALTH INSURANCE CARD	
UK	
Name	
BODY	
Given names	
ANOTHER	
Date of birth	Personal identification number
01/01/1901	UK 7777 666
Identification number of the institution	
1111 - ABC	
Identification number of the card	Expiry date
90001 00001 001 0001 0001	01/01/2010

INTRO

ITINERARY

ACCOMMODATION

SKIING

IBT

QUESTIONS

Pocket Money



Suggest £150-£200 maximum

Mixture of Sterling and Euros

Main spending will be food & drink on journey
and snacks during stay

May have some time for shopping/souvenirs in
larger town on one evening.

Hotel Hutter, Hüttai

Pupils will be accommodated in multi-bedded rooms

Solar Heated outdoor pool

Basketball, volleyball and football field

Barbecue, Bicycle rental, Table tennis

6 lounges with cinema, TV and DVD

Disco, Internet

Ski/Boot and service space



INTRO

ITINERARY

ACCOMMODATION

SKIING

IBT

QUESTIONS

Hotel Hutter, Hüttau



Evening entertainments

We can offer a range of activities for pupils, these may include:

Disco

Ice skating

Karaoke

'Aquadome' swimming

Pizza night

Pool

Snow tubing

Salzburg visit



INTRO

ITINERARY

ACCOMMODATION

SKIING

IBT

QUESTIONS

Skiing – Sportwelde Amade, Austria



Ski/Boarding Instruction

We employ the services of the local branch of the official National Ski School.

All Instructors are fully qualified and have an intimate knowledge of the ski area and safety procedures therein.



- 5 hours of instruction per day
- Hot lunch voucher for use in mountain restaurants

INTRO

ITINERARY

ACCOMMODATION

SKIING

IBT

QUESTIONS

Ski Clothing

Ski jacket

Ski trousers/salopettes

Hat

Gloves

Goggles

Thick socks



Thin, warm LAYERS underneath
(thermal top/bottoms, fleece, base
layers/under-armour, leggings, tights)
Sun protection



Travelling with IBT

Group & School Tour specialists

Established for over 25years

Fully ABTA, ATOL, School Travel Forum bonded

Head office based in Prestwick

Quality ski destinations

Comprehensive Travel & Medical Insurance

24hr emergency telephone contact during tour



INTRO

ITINERARY

ACCOMMODATION

SKIING

IBT

QUESTIONS

Health & Safety

- ABTA Protection
- ATOL License
- STF Certified
- Safety Management System
- Personnel Checks
- Hotel Safety
- Public Liability
- Fully Insured
- 24hr Tour Support
- 24hr Medical Helpline
- In resort Management Team



INTRO

ITINERARY

ACCOMMODATION

SKIING

IBT

QUESTIONS

Contact IBT

IBT Travel
Cairn House
15 Skye Road
Prestwick
Scotland
KA9 2TA

Telephone : 01292 477 771

Email : info@ibt-travel.com

www.facebook.com/IBTTravel



INTRO

ITINERARY

ACCOMMODATION

SKIING

IBT

QUESTIONS

Any Questions?





100 mi
100 km