

# SKI TRIP ITALY

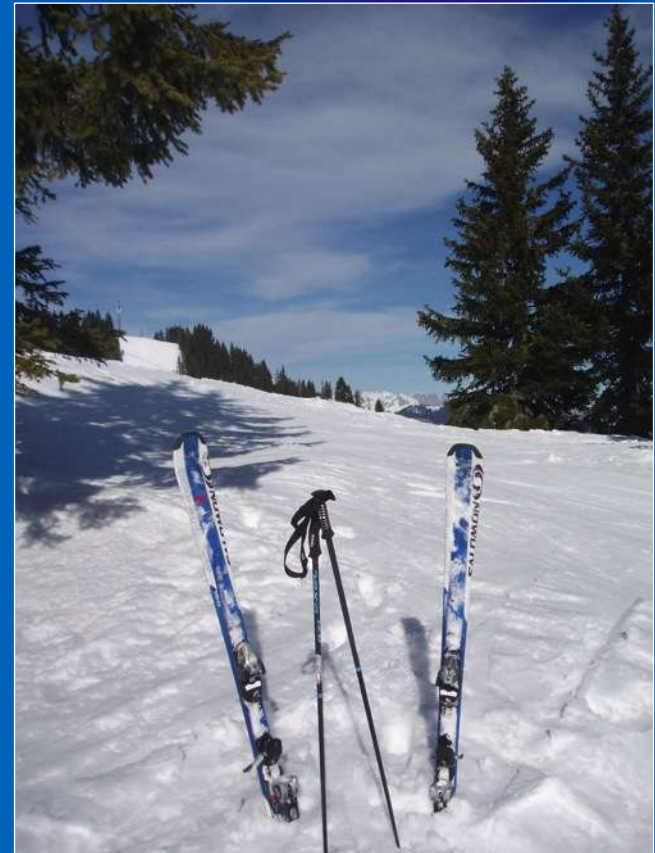


## Val di Fiemme, Italy

Saturday 14<sup>th</sup> December 2013 to  
Saturday 21<sup>st</sup>/Sunday 22<sup>nd</sup> December 2013

### Package:

- 5 nights dinner, bed & breakfast
- Evening meal before departure
- 5 days skiing (inc. Night Skiing\*)
- 5 days hot lunch voucher
- 5 hours of instruction each day
- Ski equipment hire and helmets
- Ski race and technical test
- Presentation evening



\* Good skiers only if available

INTRO

ITINERARY

ACCOMMODATION

SKIING

IBT

QUESTIONS



# Party Leader

## Michael Aitchison

Alpine Ski Leader Qualification  
Outdoor Emergency 1<sup>st</sup> Aid



INTRO

| ITINERARY

| ACCOMMODATION |

SKIING

| IBT

| QUESTIONS

# Deputy Party Leader

## Inga Ovenstone



INTRO

| ITINERARY

| ACCOMMODATION

| SKIING

| IBT

| QUESTIONS

## Claire Ross



INTRO

ITINERARY

ACCOMMODATION

SKIING

IBT

QUESTIONS



## Hayley Barr

Alpine Ski Leader Qualification  
Outdoor Emergency 1<sup>st</sup> Aid

INTRO

ITINERARY

ACCOMMODATION

SKIING

IBT

QUESTIONS

## Scott Houston



INTRO

ITINERARY

ACCOMMODATION

SKIING

IBT

QUESTIONS

## Typical Itinerary (timings are approximate)

Day 1 - 0600hrs Coach departs from Invergordon Academy  
2100hrs Check in Dover  
2205hrs Sail Dover to Calais

Day 2 - Arrive Val Di Fiemme late afternoon, check into hotel , fire drill, ski fit & settle in

Day 3 - First day skiing with 5 hours instruction \*

Day 4 - Second day skiing with 5 hours instruction \*

Day 5 - Third day skiing with 5 hours instruction \*

Day 6 - Fourth day skiing with 5 hours instruction, ski race, test & presentation

Day 7 - Fifth day skiing with 5 hours instruction, checkout out of hotel, dinner and depart  
1800hrs for journey home

Day 8 - Ferry crossing from Calais to Dover 1135hrs, arriving back at school Sunday  
morning approximately 0300hrs

\* Times will be adjusted if night skiing available



## The Journey

**Invergordon, Scotland**

Dover, England

Calais, France

Passing through Belgium,  
Germany, Austria

**Verena, Italy**



INTRO

ITINERARY

ACCOMMODATION

SKIING

IBT

QUESTIONS

## Transportation

Your transport will be provided by Simpsons of Rosehearty

Seat belts & toilet

Reclining seats

Air conditioning

TV with DVD player

Hot water boiler



INTRO

ITINERARY

ACCOMMODATION

SKIING

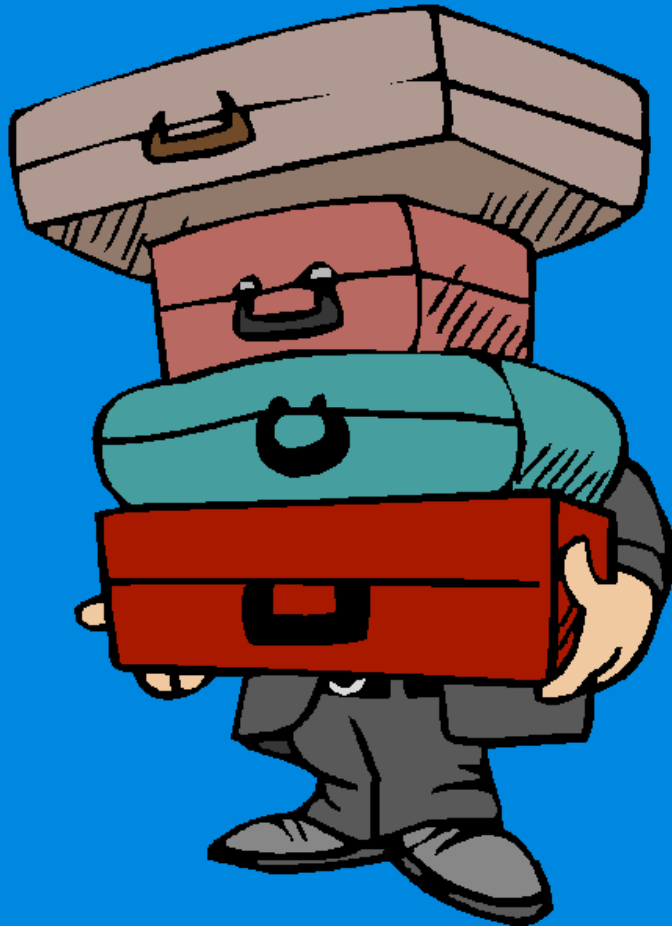
IBT

QUESTIONS

## Transportation

Short Sea Crossing  
Dover to Calais





## Luggage

Typical luggage would be:

1 medium suitcase (soft bodied preferable)

Small carry on hold-all not more than 10 kg

## For the journey

Comfortable clothes

Travel pillow, blanket

MP3 player, games console

Books, magazines, DVD's

Juice/water, snacks

Toiletries



INTRO

ITINERARY

ACCOMMODATION

SKIING

IBT

QUESTIONS



## Medication

Clearly labeled (name, dose, frequency)

Hand in to school by Friday 22<sup>nd</sup> November

e.g. Paracetamol, Aspirin, Ventolin, Travel  
Sickness medication, etc



EUROPEAN HEALTH INSURANCE CARD

UK

1. Surname  
BODY

2. Given names  
ANOTHER

3. Date of birth  
01/01/1901

4. Personal number  
UK 7777 666

5. Identification number of the institution  
1111 - ABC

6. Identification number of the card  
90001 00001 001 0001 0001

7. Expiry date  
01/01/2010

INTRO

ITINERARY

ACCOMMODATION

SKIING

IBT

QUESTIONS

## Pocket Money



Suggest £150-£200 maximum

Mixture of Sterling and Euros

Main spending will be food & drink on journey  
and snacks during stay

May have some time for shopping/souvenirs in  
larger town on one evening.

## Hotel Alla Rocca, Verana

Pupils will be accommodated in multi-bedded rooms

Quiet village location,  
36 comfortable rooms, all provided with  
private bathroom, colour-TV, telephone  
and hair-drier.

Plenty space to  
relax, lounge, TV  
room, games  
room and party  
room.



## Hotel Alla Rocca, Verana

Please note that we will not be the only group/guests in the hotel.

Our group must be respectful of other guests.





## Evening entertainments

We can offer a range of activities for pupils, these may include:

Disco

Ice skating

Karaoke

Swimming

Pizza night

Quiz night

Billiards

Snow tubing

Night skiing (good skiers only)



## Skiing – Val di Fiemme, Italy

### Resort info:

Resort Height	2500m
No. of Lifts	45
No. of Trails	84
Easy runs	37%
Medium runs	90%
Difficult Runs	17%
Skiable Area	144kms
Longest Run	7km
Snow making	Yes
Average Snowfall	N/A
Lift Pass	Val Di Fiemme, Obereggen, Bellamonte & Passo Rolle



INTRO

ITINERARY

ACCOMMODATION

SKIING

IBT

QUESTIONS

## Skiing – Val di Fiemme, Italy









INTRO

ITINERARY

ACCOMMODATION

SKIING

IBT

QUESTIONS

## Skiing – Val di Fiemme, Italy



## Ski Instruction

We employ the services of the local branch of the official National Ski School.

All Instructors are fully qualified and have an intimate knowledge of the ski area and safety procedures therein.



- 5 hours of instruction per day
- Hot lunch voucher for use in mountain restaurants

INTRO

ITINERARY

ACCOMMODATION

SKIING

IBT

QUESTIONS



Thin, warm LAYERS underneath  
(thermal top/bottoms, fleece, base  
layers/under-armour, leggings, tights)  
Sun protection





INTRO

ITINERARY

ACCOMMODATION

SKIING

IBT

QUESTIONS

## Travelling with IBT

Group & School Tour specialists

Established for over 25years

Fully ABTA, ATOL, School Travel Forum bonded

Head office based in Prestwick

Quality ski destinations

Comprehensive Travel & Medical Insurance

24hr emergency telephone contact during tour





INTRO

ITINERARY

ACCOMMODATION

SKIING

IBT

QUESTIONS

## Health & Safety

- ABTA Protection
- ATOL License
- STF Certified
- Safety Management System
- Personnel Checks
- Hotel Safety
- Public Liability
- Fully Insured
- 24hr Tour Support
- 24hr Medical Helpline
- In resort Management Team



INTRO

ITINERARY

ACCOMMODATION

SKIING

IBT

QUESTIONS

## Contact IBT

IBT Travel  
Cairn House  
15 Skye Road  
Prestwick  
Scotland  
KA9 2TA

Telephone : 01292 477 771

Email : [info@ibt-travel.com](mailto:info@ibt-travel.com)

[www.facebook.com/IBTTravel](http://www.facebook.com/IBTTravel)



INTRO

ITINERARY

ACCOMMODATION

SKIING

IBT

QUESTIONS

Any Questions?



INTRO

| ITINERARY

| ACCOMMODATION

| SKIING

| IBT

| QUESTIONS

